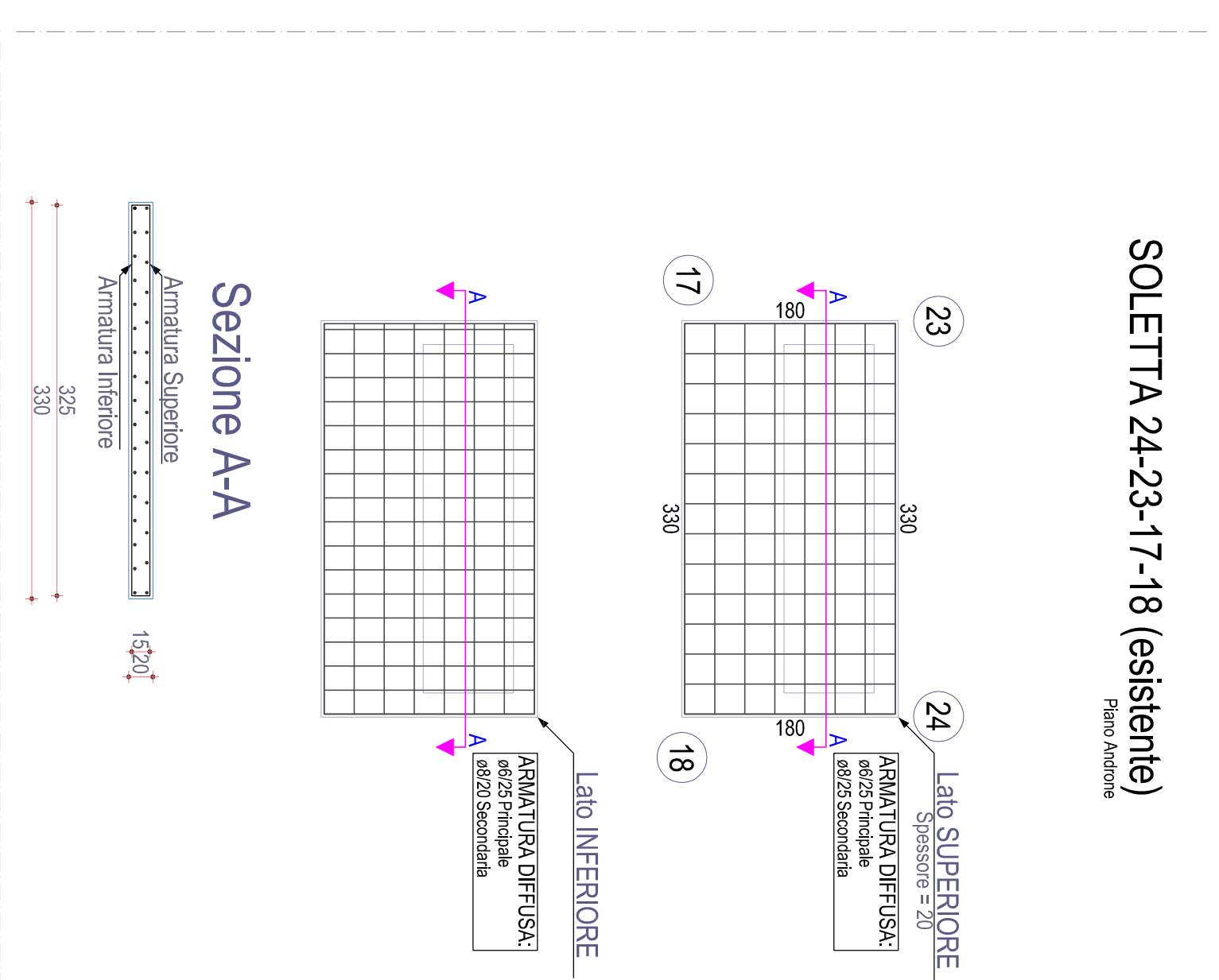
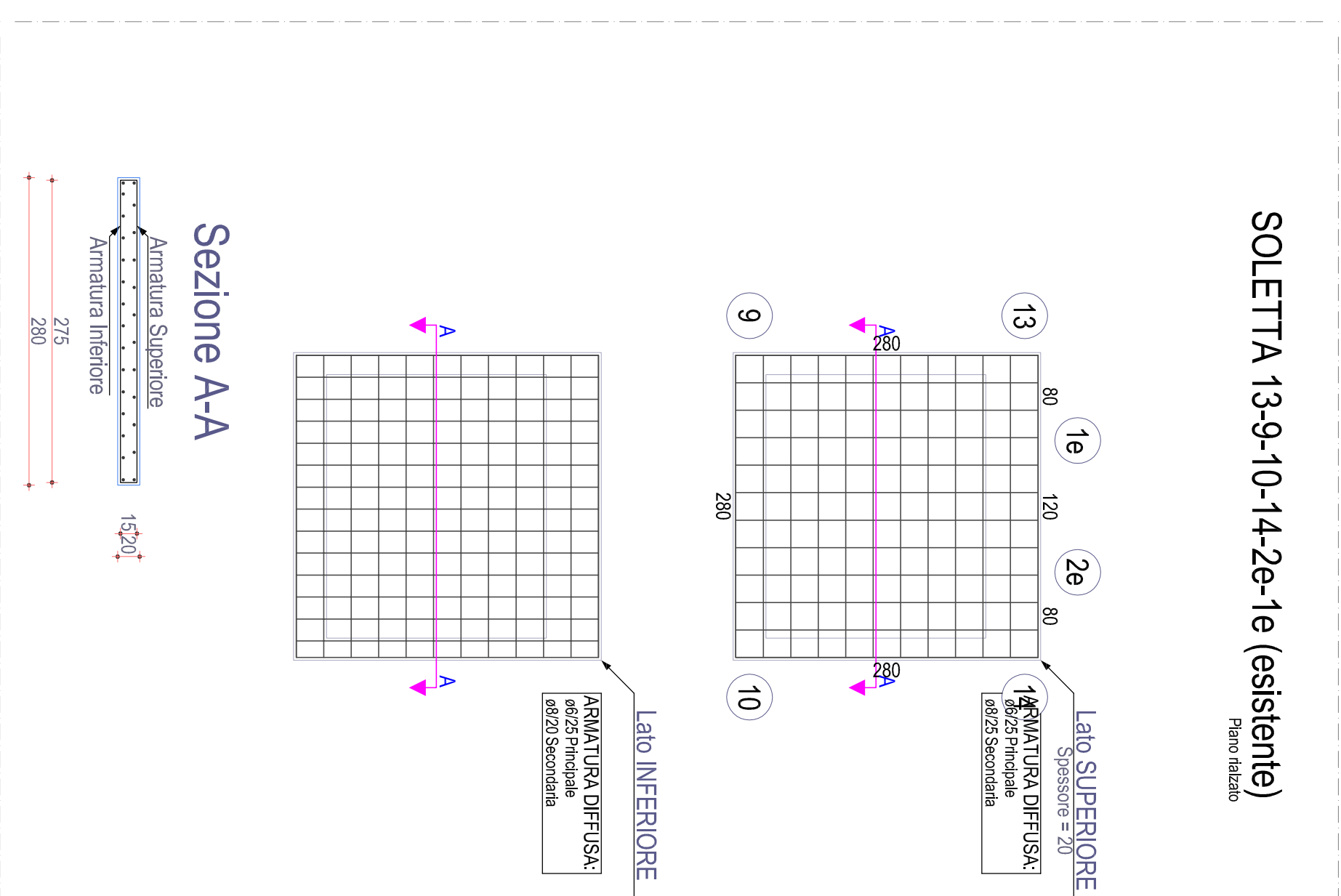
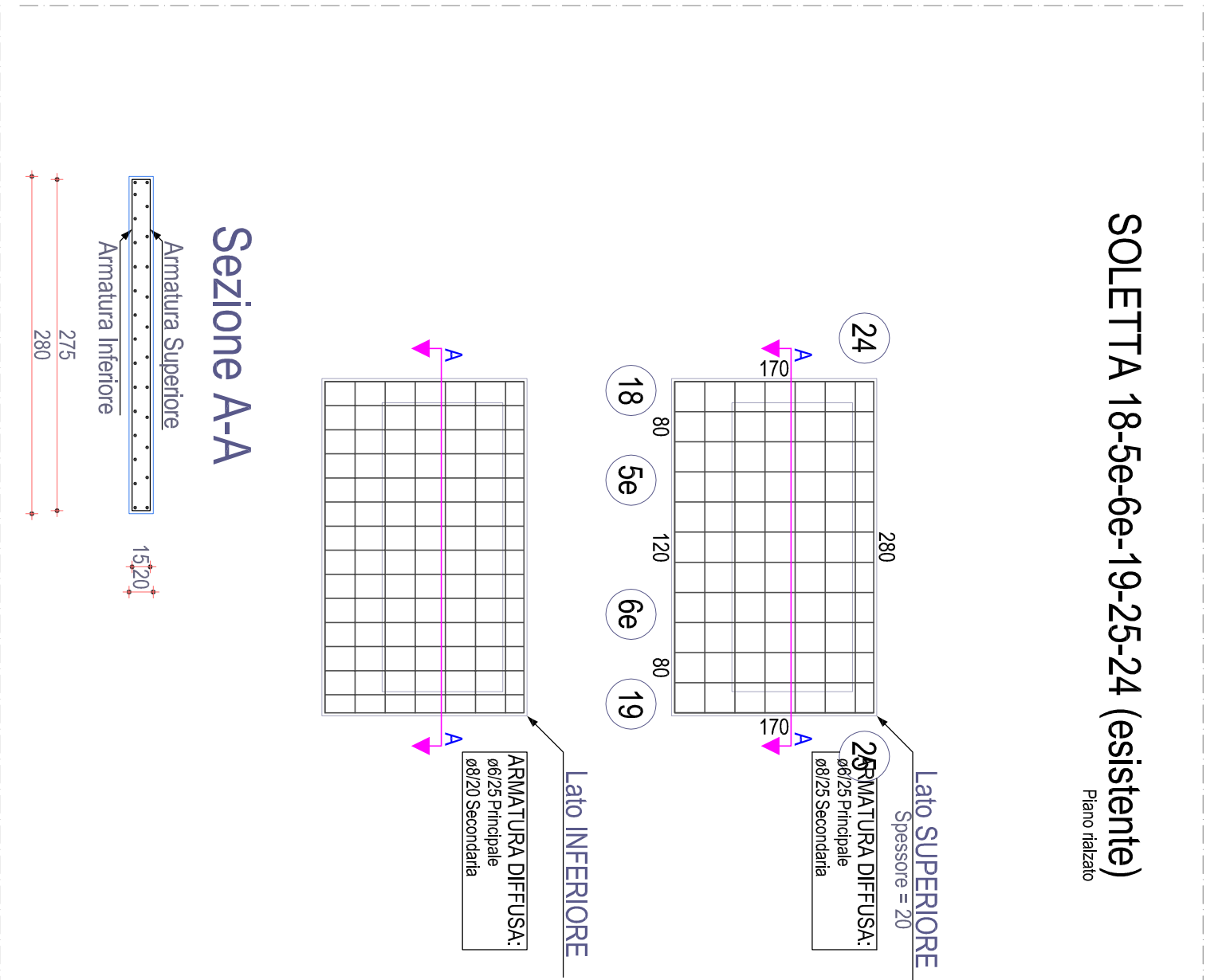
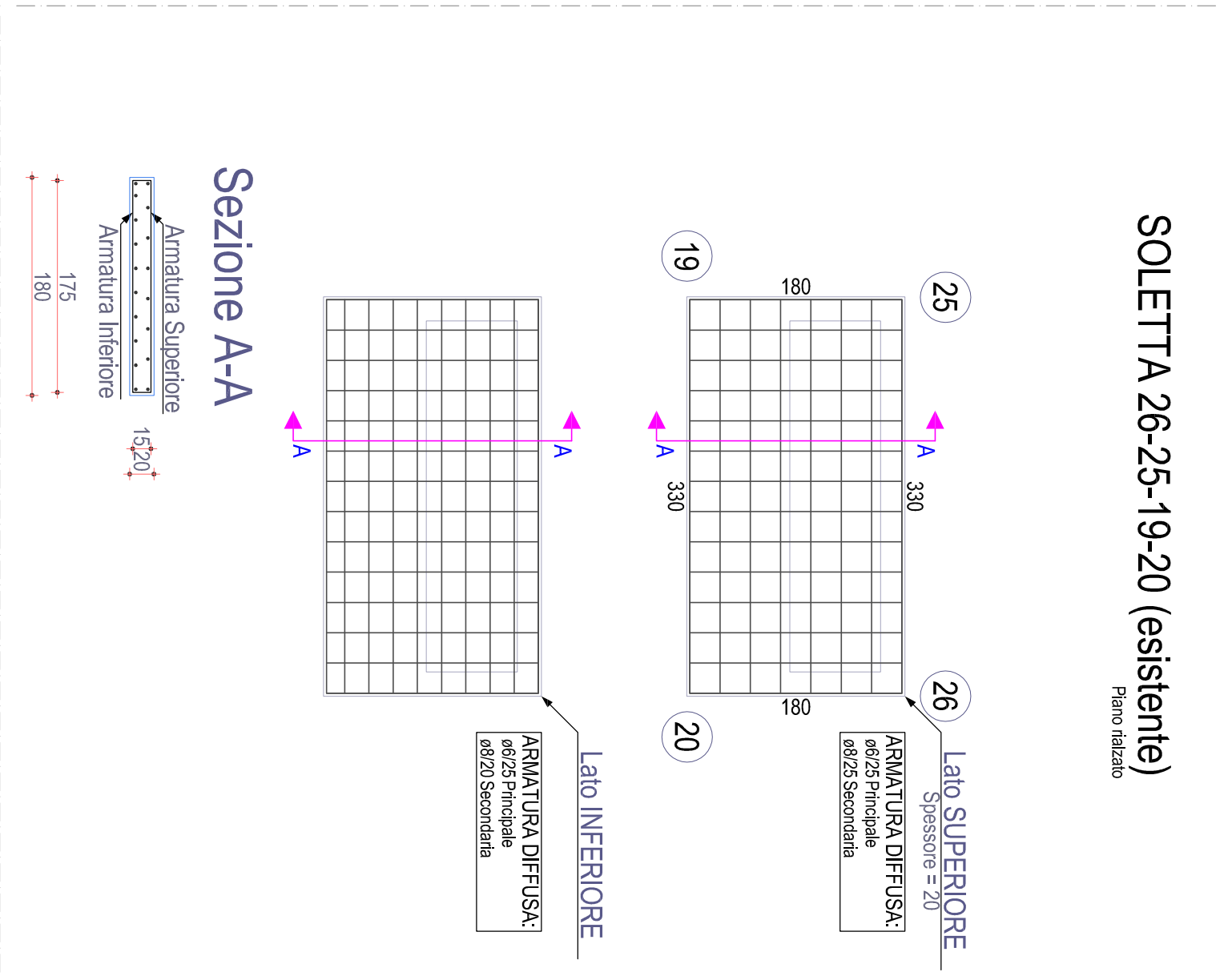
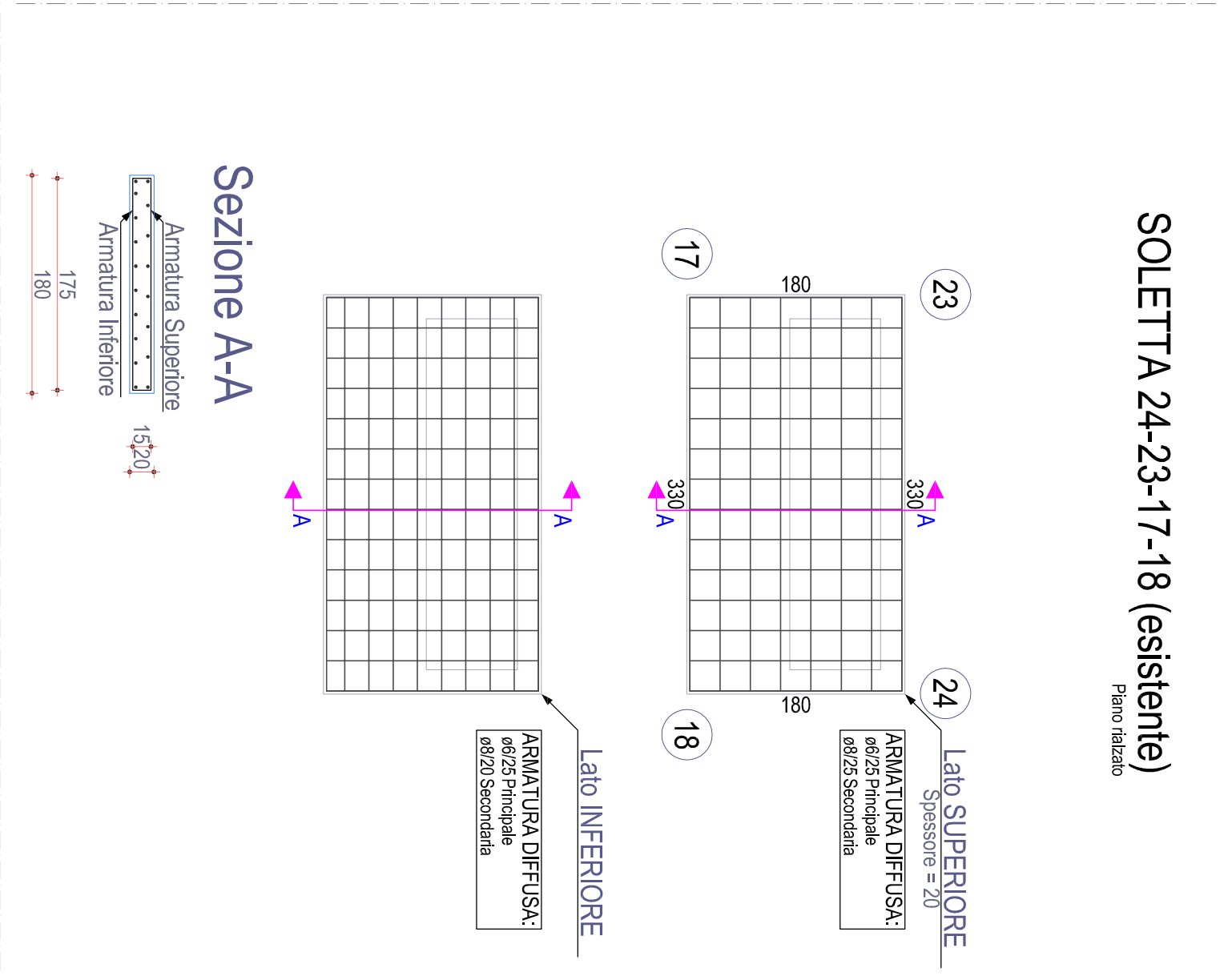


FOR PUGLIA FESR 2014-2020
ASSE IV, AZIONE 4.1 e ASSE IX, AZIONE 9.13

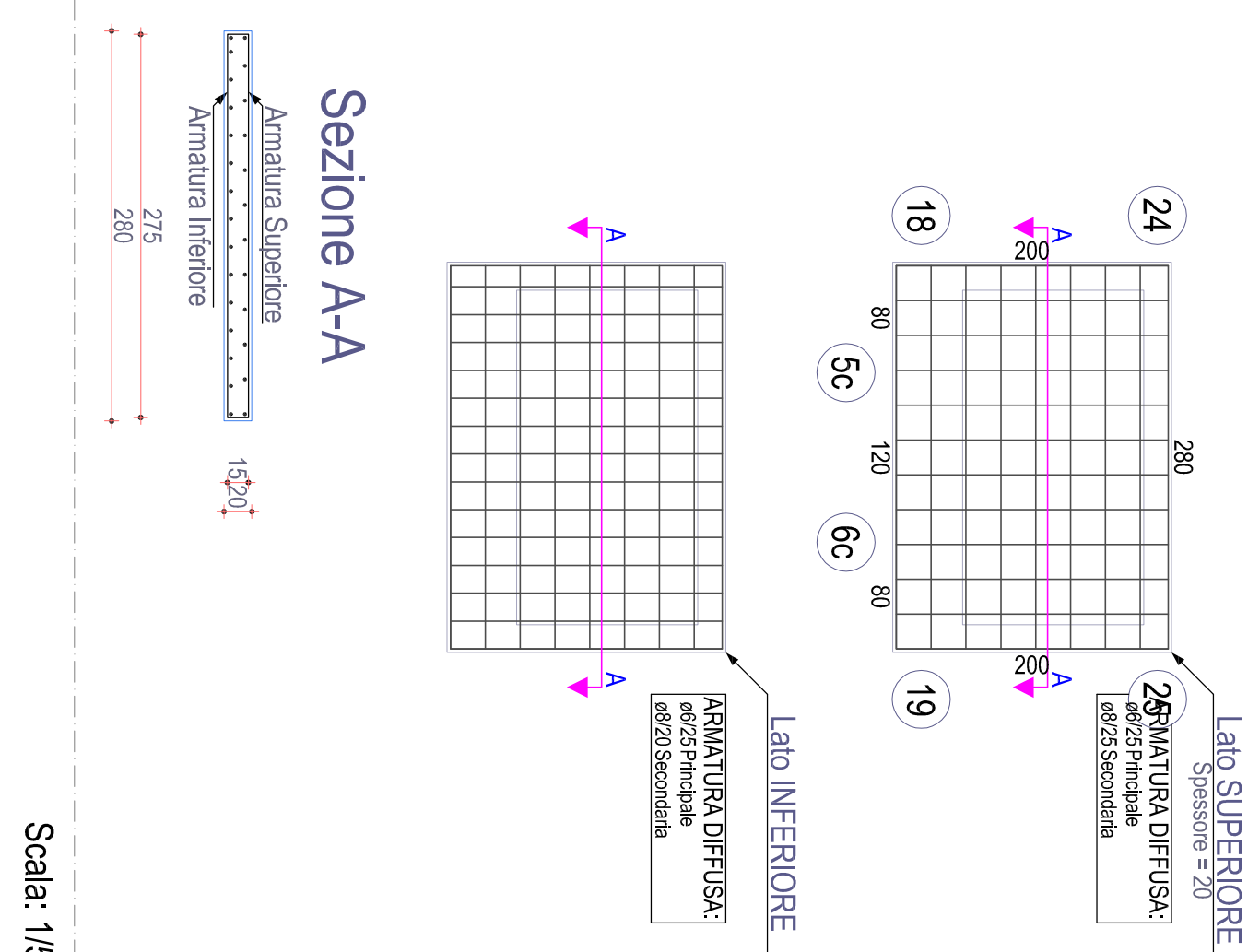
Comune di Lucera
Intervento di verifica statica, efficientamento energetico e eliminazione delle
barriere architettoniche del lotto A.R.C.A. Capitanata n. 450,
sito in Via Itzono
Finanziamento: € 5.500.000

Il progettista Arch. Roberto Galati Arch. Roberto Galati Via Itzono, 11/13 - 71013 Lucera (Fg) - telefono 0884/900000 - email: galati@arcanet.it	Il responsabile tecnico del procedimento e il responsabile dell'attività di progettazione (Ing. Ubaldo Carattoni ARCA Capitanata) Ing. Francesco Sisti
Il dirigente dell'Area Urbanistica Ing. Vincenzo De Gennaro	

TAVOLA ESI 1 SOLETTI	DESCRIZIONE STRUTTURE BLOCCO "B" STATO ATTUALE	SCALA 1:500 L.M.A.
ACCOMPAGNAMENTI 86	L. INTERIORE DEL VANTO	

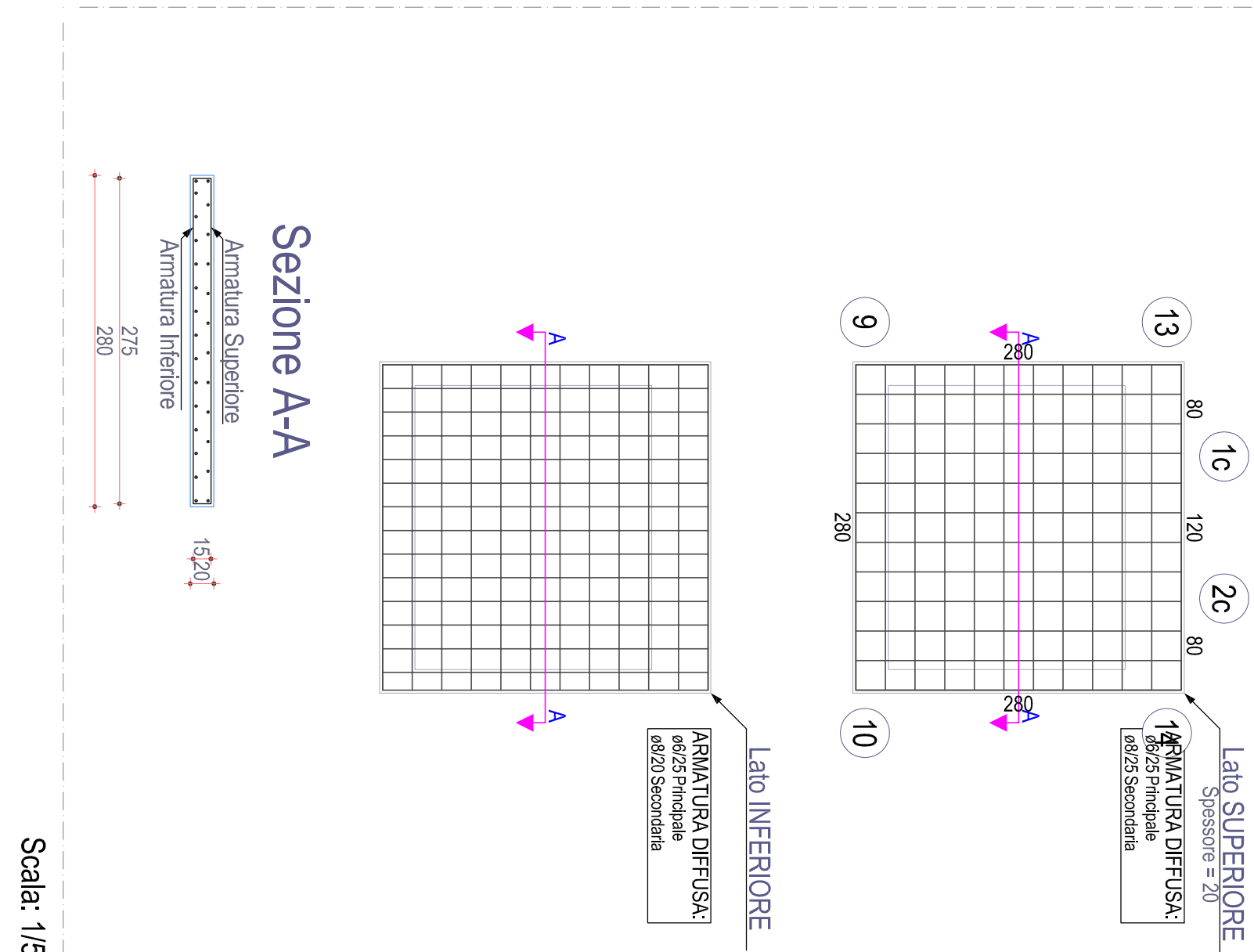


SOLETTA 19-25-24-18-5c-6c (esistente)
Piano Intero



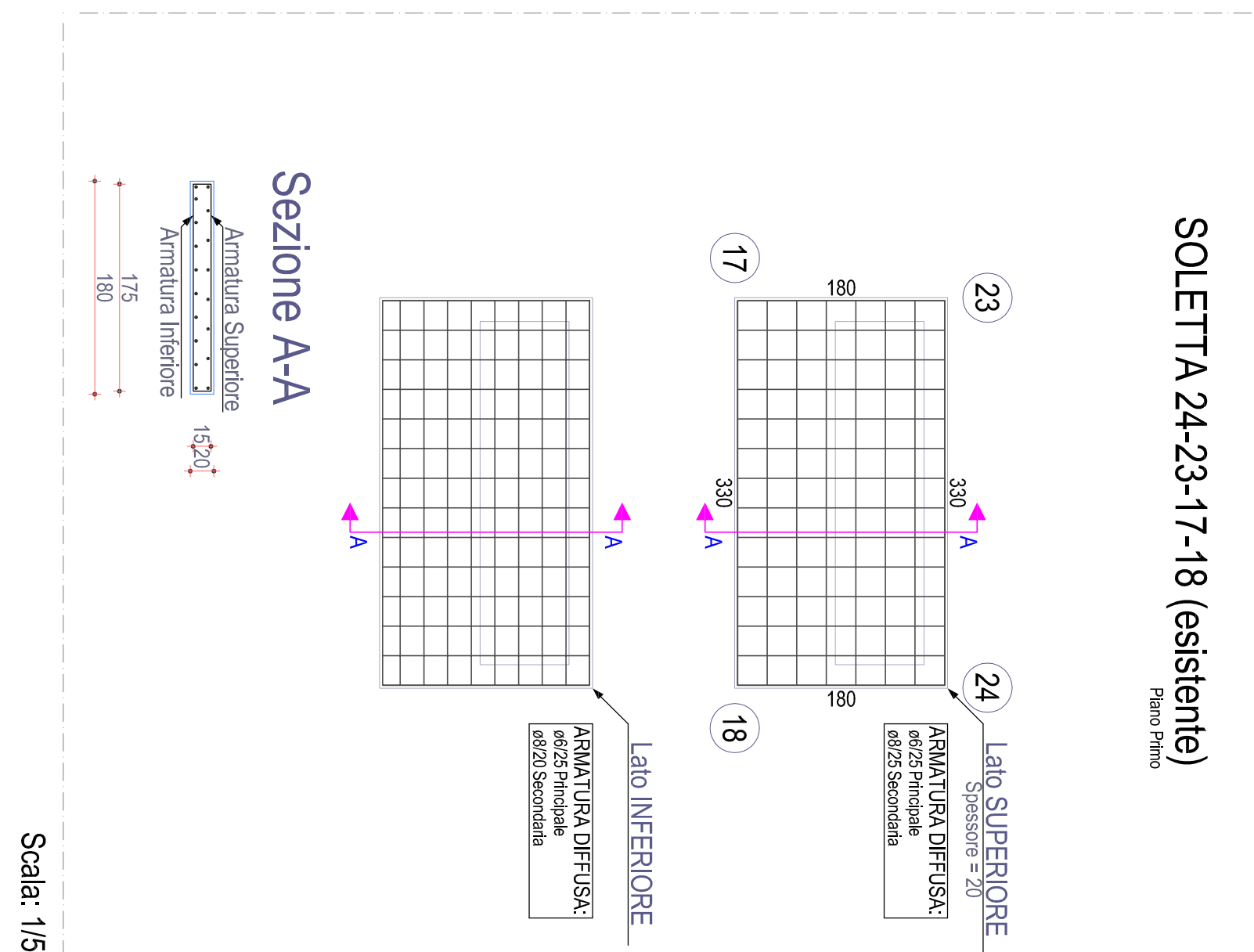
Scala: 1/50

SOLETTA 13-9-10-14-2c-1c (esistente)
Piano Intero



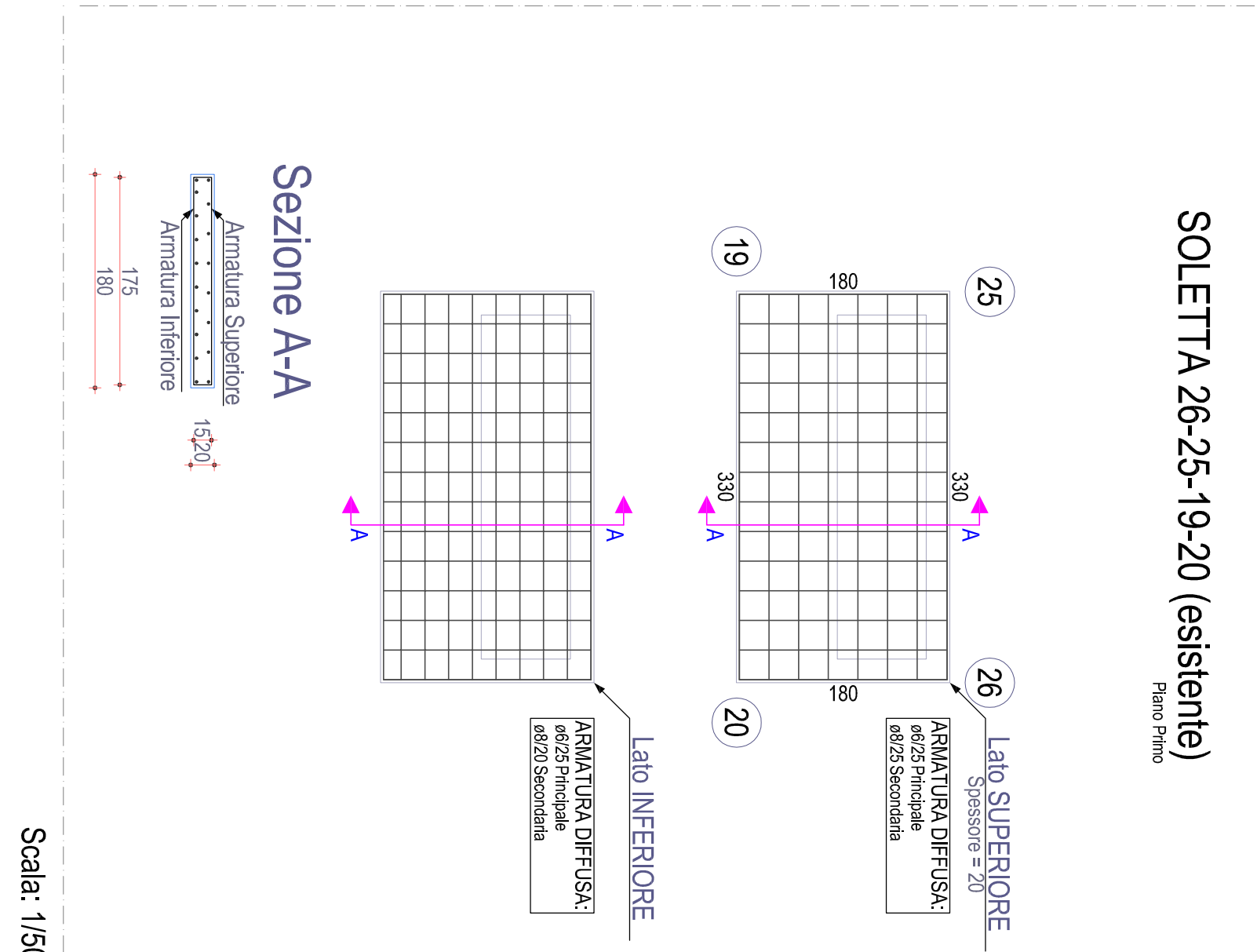
Scala: 1/50

SOLETTA 24-23-17-18 (esistente)
Piano Intero



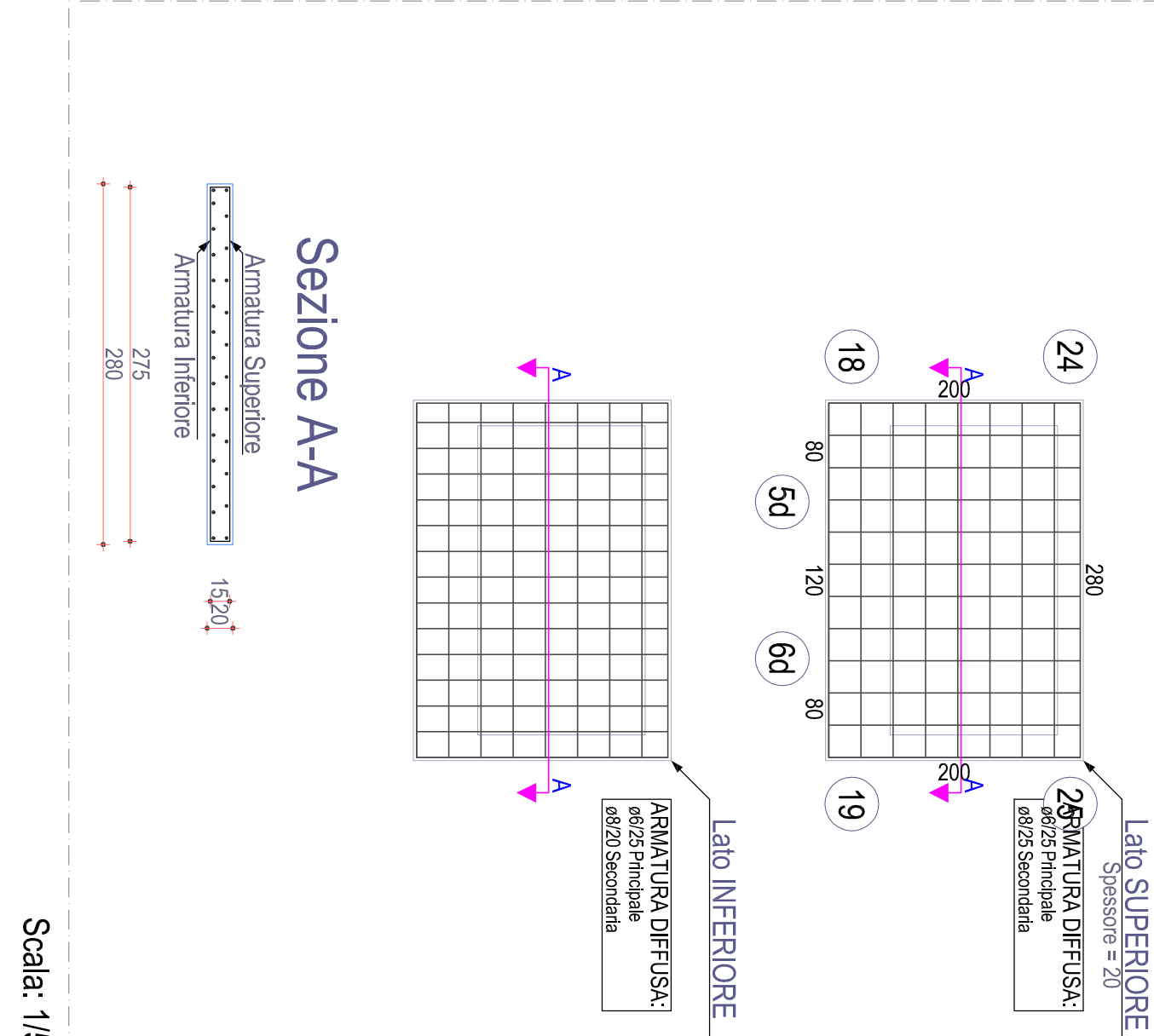
Scala: 1/50

SOLETTA 26-25-19-20 (esistente)
Piano Intero



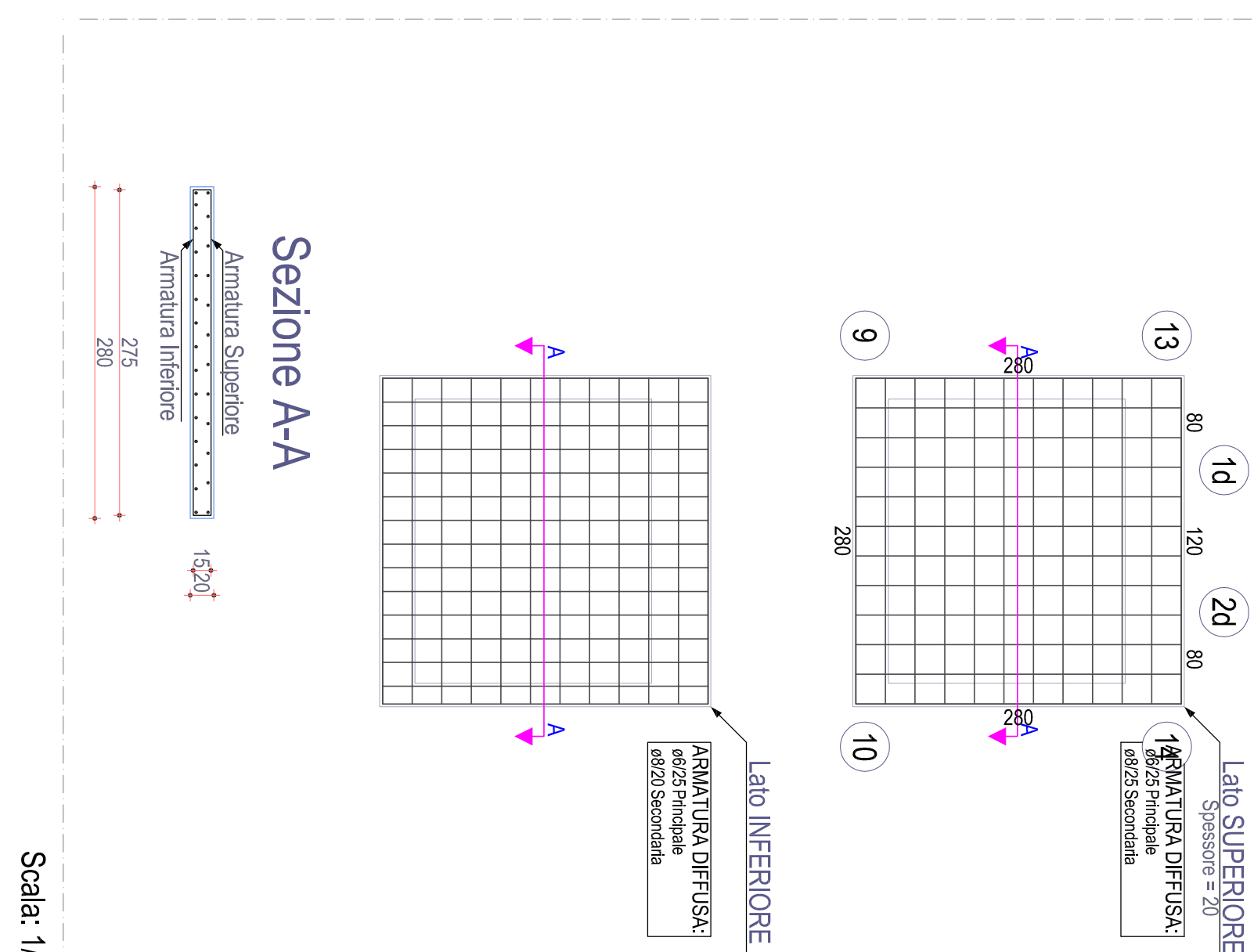
Scala: 1/50

SOLETTA 19-25-24-18-5d-6d (esistente)
Piano Intero



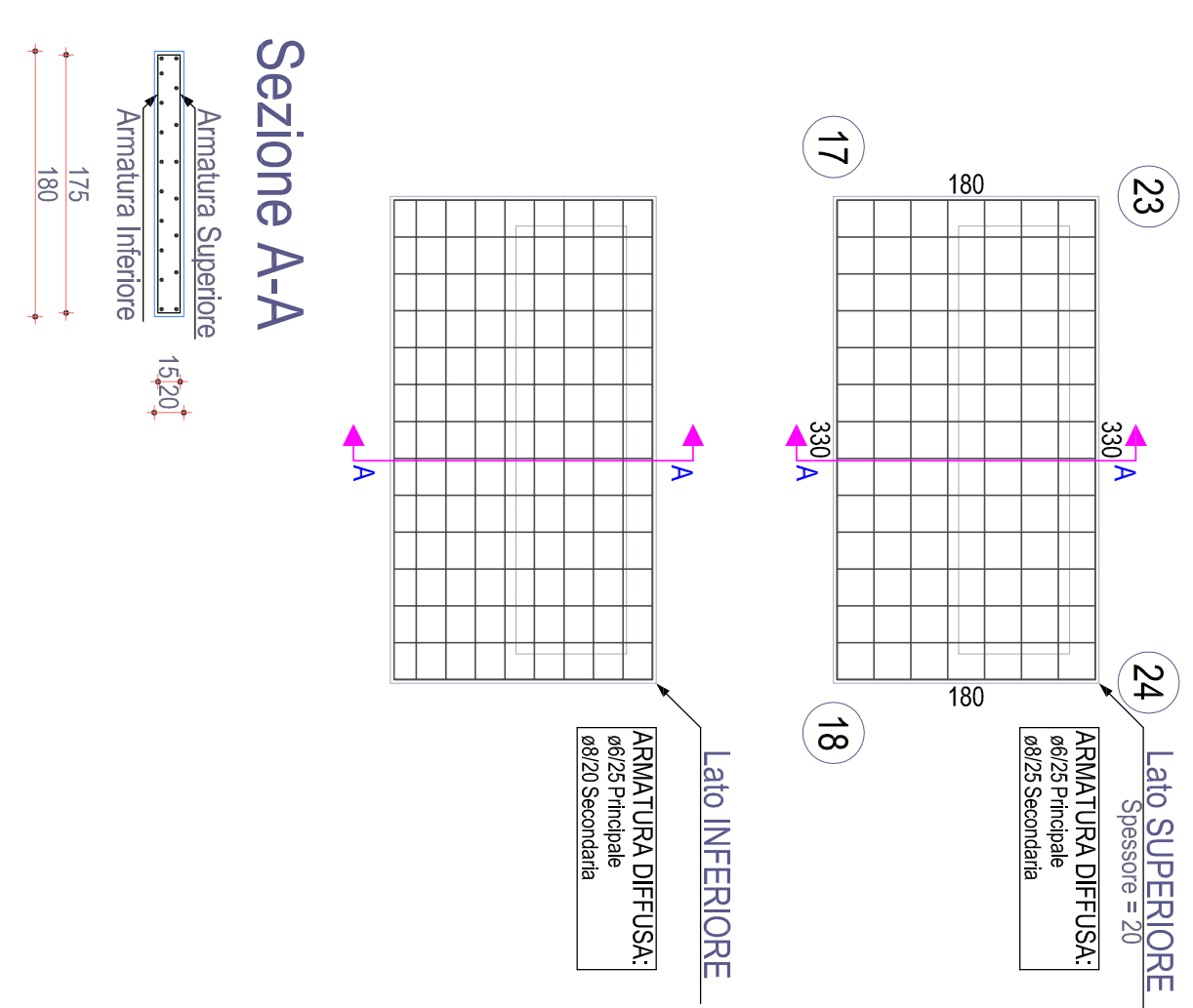
Scala: 1/50

SOLETTA 13-9-10-14-2d-1d (esistente)
Piano Intero



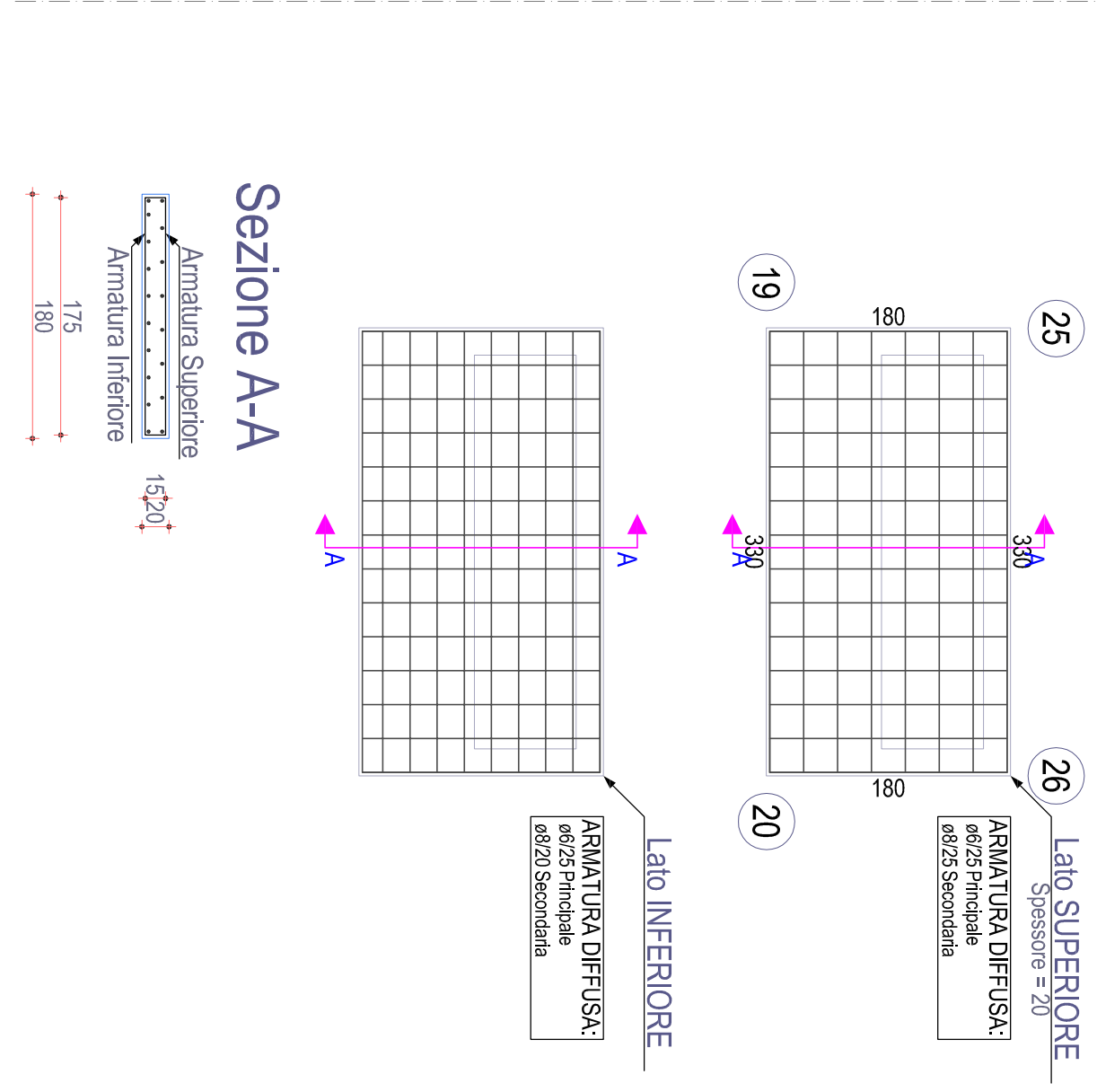
Scala: 1/50

SOLETTA 24-23-17-18 (esistente)
Piano Intero



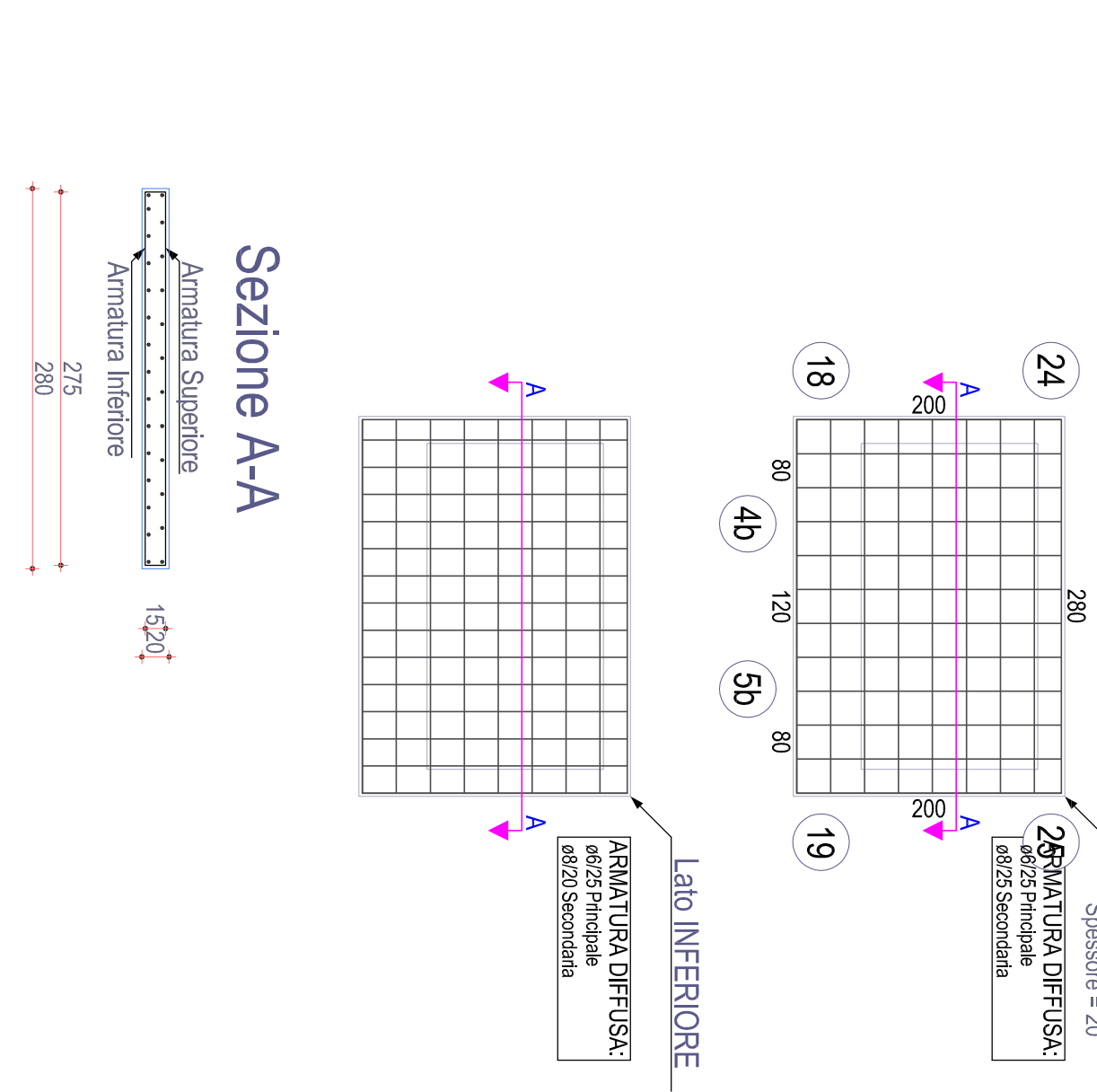
Scala: 1/50

SOLETTA 26-25-19-20 (esistente)
Piano Intero



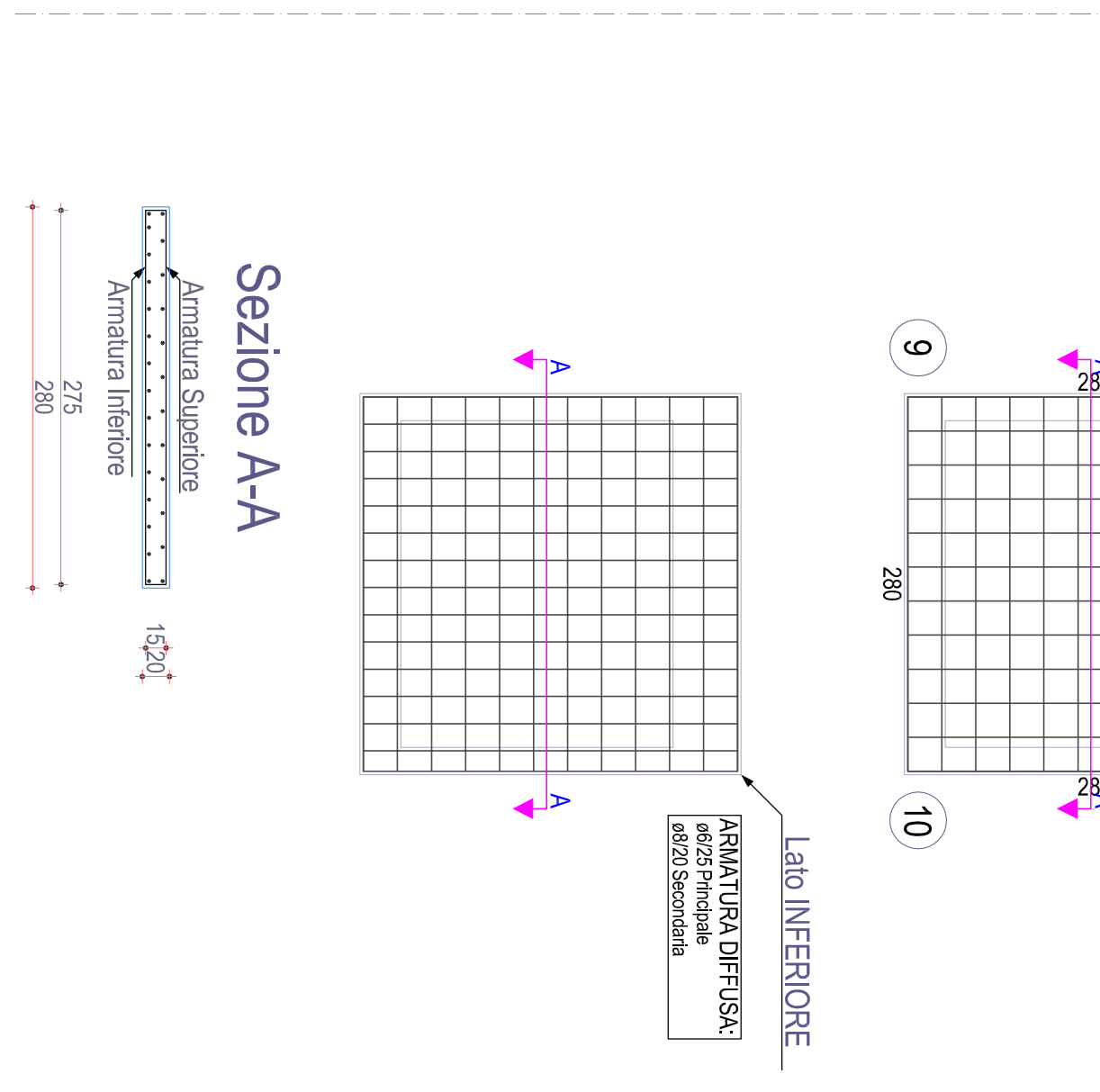
Scala: 1/50

SOLETTA 19-25-24-18-4b-5b (esistente)
Piano Intero



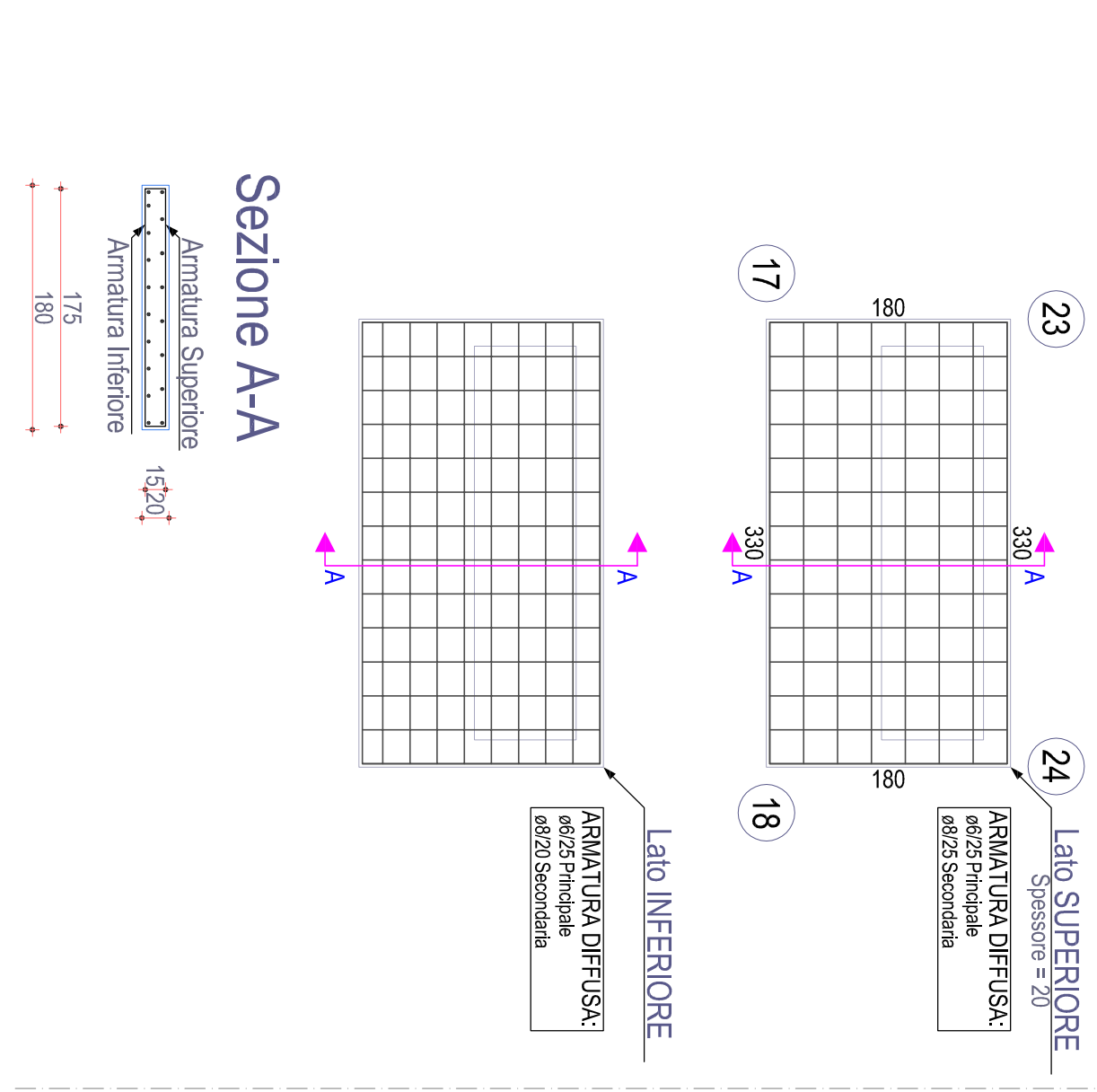
Scala: 1/50

SOLETTA 13-9-10-14-1b (esistente)
Piano Intero



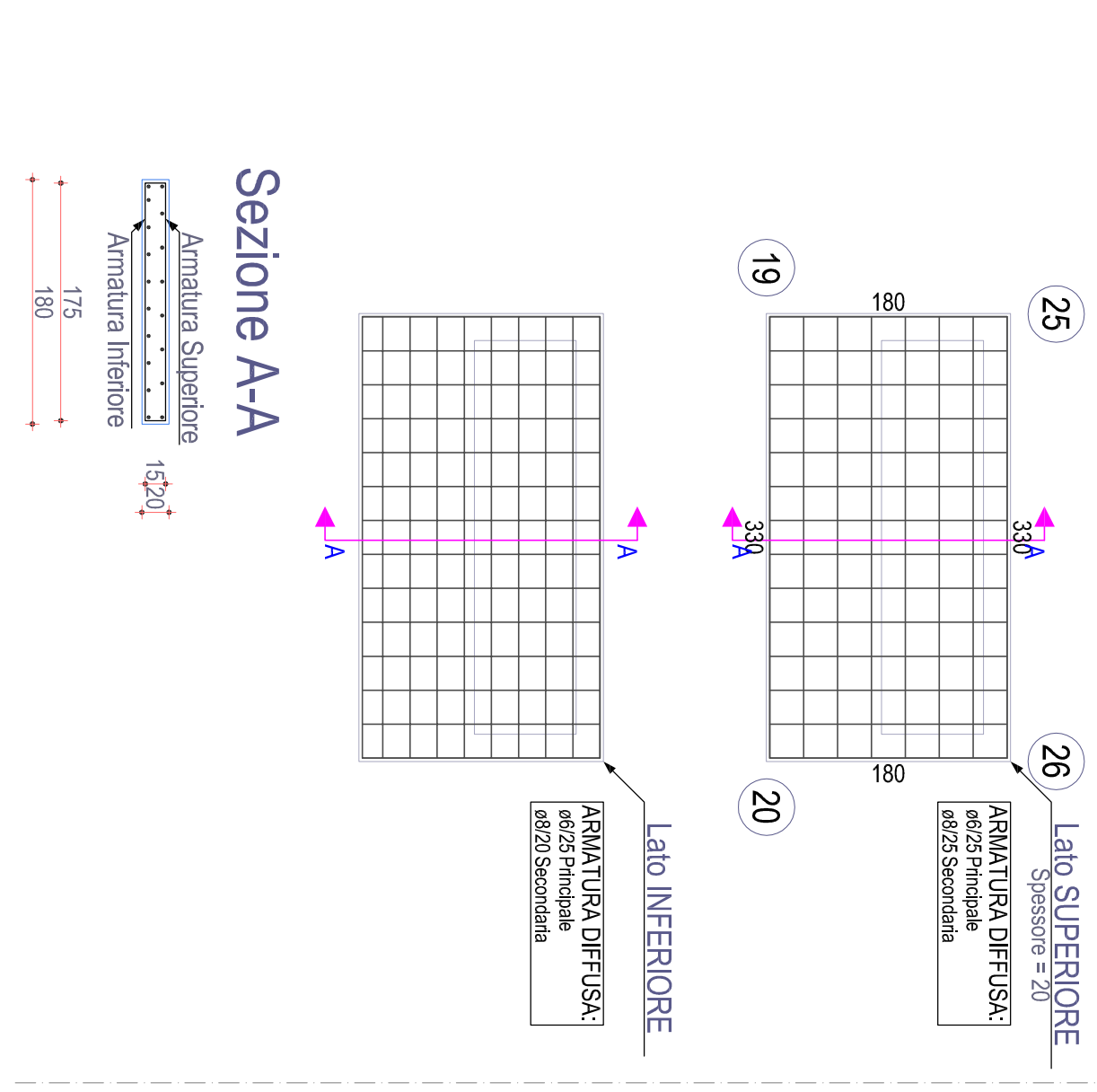
Scala: 1/50

SOLETTA 24-23-17-18 (esistente)
Piano Intero



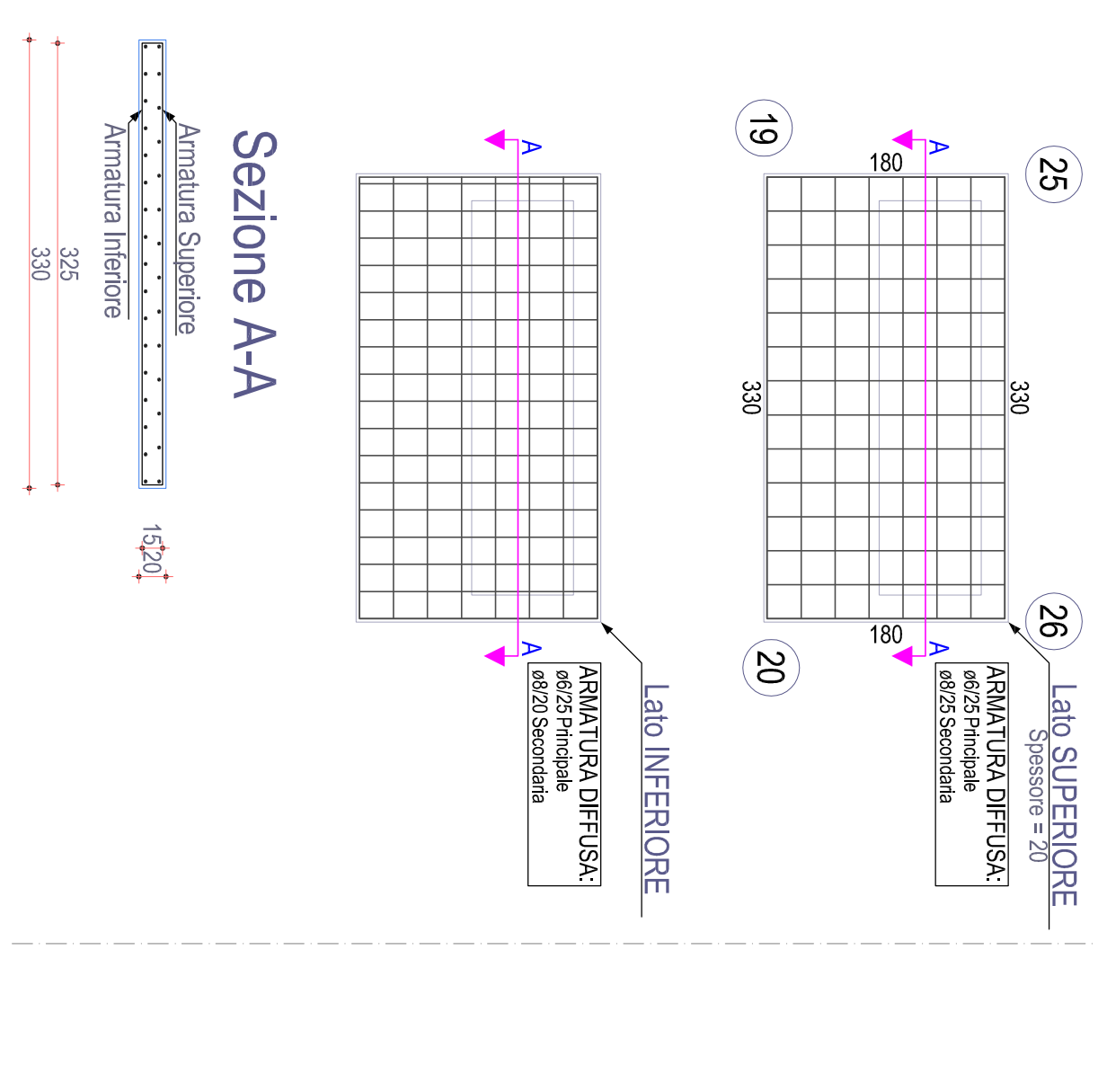
Scala: 1/50

SOLETTA 26-25-19-20 (esistente)
Piano Intero



Scala: 1/50

SOLETTA 26-25-19-20 (esistente)
Piano Intero



Scala: 1/50